

The Jarrahdale Jaunt Rogaine

WARA Spring 12 Hour Event

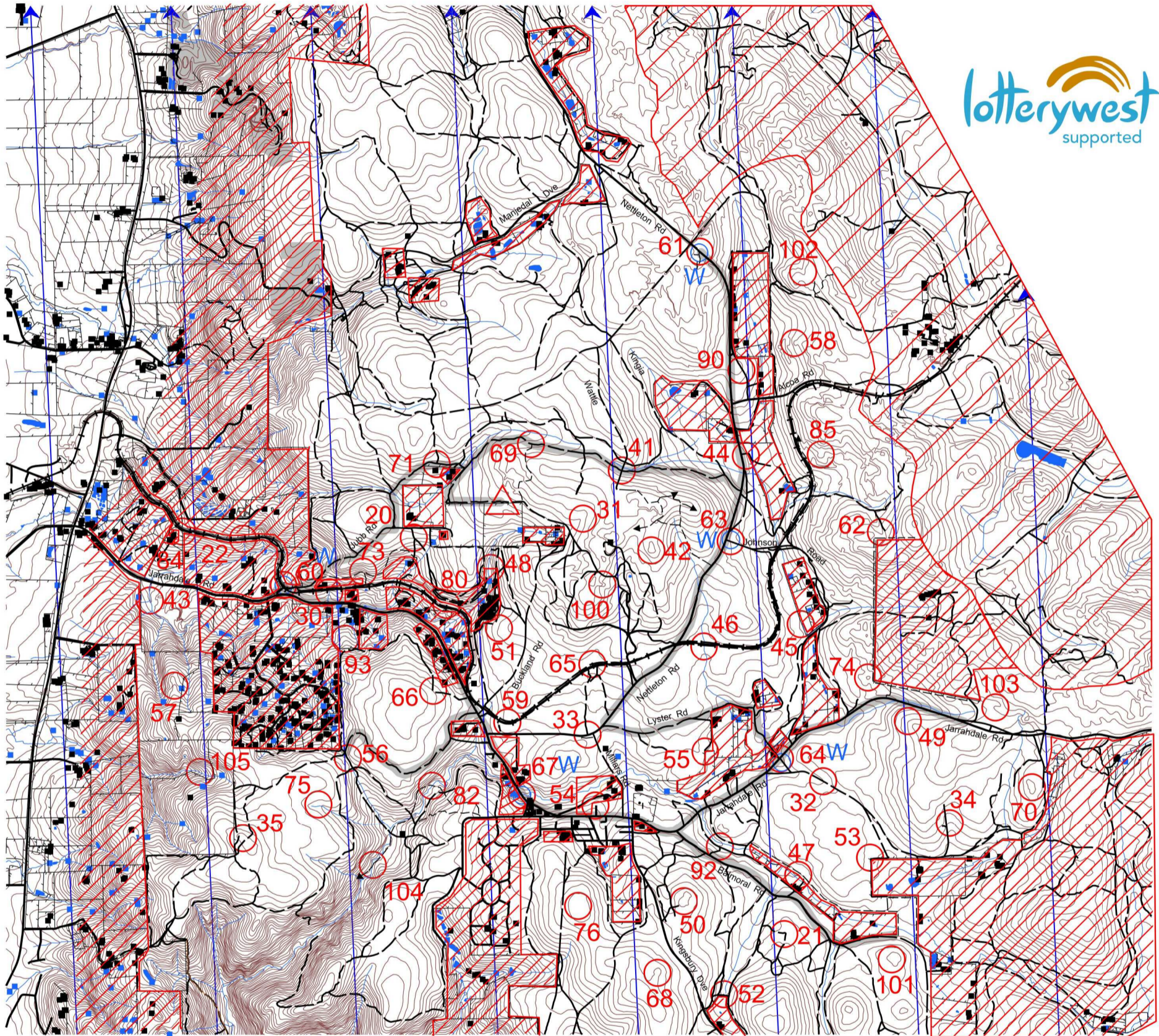
Saturday 22nd October 2016



Department of Sport and Recreation

GOVERNMENT OF WESTERN AUSTRALIA

Emergency Contact
 Satellite Phone +881 622 449 700
 John Najar Mobile 0402 178 537



LEGEND

- Building
- Continuations
- Control 72
- Contours
- Dam
- Fence
- Hash House
- Magnetic North Line
- Out of Bounds
- Road, Sealed
- Road, Major Gravel
- Track
- Unused Rail Line
- Watercourse
- Water Drop W
- Patrolled Road



Setters and Veters

John Tanner Dick Blom
 Nick Lethbridge Brian Austin

Landowners

WARA gratefully acknowledges the land holders for their permission and support
 Alan Star (HH), Alastair MacKendrick, Brian Moore, Greg Cox, Colin & Hilary Abbott, Lynette Iannello, Colin & Murray Atkinson, Neville & Lloyd Mathews, Peter Petros, Tony & Shirley Kukulj, Steven Della Bona (WA Limestone), National Trust of WA, David Turner (Manager Manjedal Activities Centre), Gemma Norwell (Shire of Serpentine/Jarrahdale)



Scale 1 : 50,000 5 metre contour interval



The "Jarrahdale Jaunt" Spring 12 Hour Rogaine 22nd October 2016

No.	Description	Points	No.	Description	Points	Important Information
20	The Track Junction	20	60	Road/Rly Inters 305deg 30m (Water)	60	Control Cards From 9-30 Saturday
21	The Bush Track Bend (Note Track Sth is indistinct)	20	61	Road/Track Inters 50deg 60m (Water)	60	
22	"A" Culvert/Track xing 240deg 15m	20	62	The Gully	60	
30	NW cnr of "A" Small Dam 40deg 20m	30	63	Road/Eastern Power Line Inters Due Nth 35m (Water)	60	Briefing 9-45 Saturday
31	The Gully	30	64	Road Inters 160deg 45m (Water) 30m west side)	60	
32	Power Pole No 989933 in the middle of the Road 210deg 60m	30	65	"A" Rly Culvert 325deg 40m	60	
33	Road/Track Inters 185deg 75m	30	66	"A" Fence Cnr 215deg 40m	60	Start 10-00 Saturday
34	The Broad Gully	30	67	Road/WC Xing 55deg 90m (Water)	60	
35	The Summit	30	68	"A" Broad Knoll	60	
			69	The Road/Track Inters 200deg 30m	60	Finish 22-00 Saturday
41	The Cross Roads Inters 135deg 60m	40	70	The Knoll	70	
42	The Summit	40	71	The Road Inters Due Sth 25m	70	
43	The WC Inters (Approach from the west side)	40	73	Heritage Trail Track (East side of old Clay Pit)	70	Hash House Opens at 1700 Sat Closes by 23-00 Sat
44	Power Pole No 995501 80deg 25m	40	74	The Knoll	70	
45	Drain Fence Angle 285deg 55m	40	75	The Gully	70	
46	"A" Rly Culvert 188deg 50m	40	76	The Broad Summit		Sun Break 6-00 to 8-00
47	The Ruined Fence Angle	40				
48	WC/Bdy Inters 5m Nth of Old Ruined Fence	40	80	"A" Rly Culvert 300deg 10m	80	
49	The Spur	40	82	Old Wooden Footbridge/WC Xing 150deg 30m	80	Sunset 1833
			84	The Fence Inters 195deg 35m	80	
50	The Broad Summit (70m ENE of the mast)	50	85	"A" Knoll	80	
51	The Broad Spur	50				Silvery Moonrise 0003
52	The WC/Fce Inters	50	90	The Broad Spur (20m West of an corrugated Iron Tank)	90	
53	The Fence Cnr 335deg 60m	50	92	The Track Inters 50deg 30m	90	
54	"A" Red Bdy Survey Peg 295deg 30m	50	93	The Spur (SE of "A" water Tank)	90	Silvery Moonset 1050
55	The Fence Cnr 275deg 30m	50				
56	The Long Narrow Saddle 210deg 25m	50	100	The Spur in the Pines	100	
57	"A" Knoll	50	101	The Summit	100	Late Penalty 10 points per minute or part minute.
58	The Small Spur	50	102	The Gully	100	
59	Rly Bend Due Nth 50m	50	103	The Gully	100	
			104	Footbridge/WC Xing 150deg 30m	100	LATE (no points) later than 2230 Saturday
			105	"A" WC Inters	100	
						Controls Used 57
Water Drops: At Controls 60, 61, 63, 64, 67 If you are injured please make your way to a water drop or a patrolled road and wait there for help.			Patrolled Roads. See roads indicated on the map:			Total Points 3310